

Coconut Rhinoceros Beetle

Instruction Sheet



Thank you for helping us stop the spread of the invasive coconut rhinoceros beetle or CRB. The CRB is a major pest of the Pacific that feeds on palms like coconut, fan, royal, and date.

Breeding Site Survey Instructions:

Have your larger group break out into smaller groups. Each group should have one data collector and a few diggers. Ensure everyone in the group is wearing gloves and safely using their tools. CRB breed in decaying plant material so green waste, compost, and mulch can all be potential breeding sites. Once the area is surveyed. Submit the data to the CRB Response by following the QR code link and filling out the Google Form.

Supplies per Group:

- worksheet
- tape measure
- clipboard
- pen/ pencil
- phone/ GPS unit
- hand tools (enough for each member)
- gloves (enough for each member)

Roles:

- Data collector role: the data collector will be responsible for recording all information from the survey. They should be equipped with a clipboard, pen, phone or GPS unit (for recording the lat/long), and tape measure.
- Surveyor: the surveyors will slowly dig through the material being inspected. Ensure the surveyors are being safe and thoroughly combing through the material.

If a CRB is found:

1. Take a clear photo (record a video of how it's crawling if it is a larva)
2. Place the found insects in a glass jar. Coconut rhinoceros beetles can burrow their way through soft plastics
3. Contact the CRB Response: text or email the photos found
 - a. Phone: (808)679-5244
 - b. Email: info@crbhawaii.org
4. Hold on to the insect until the CRB Response can collect them from you. As an invasive species, it is illegal to knowingly keep CRB.



Use this QR code link to submit the data collected



Coconut Rhinoceros Beetle Breeding Site Survey

LAT

LONG

GPS coordinates of pile searched: _____

Rate the material. Give one point for every suitable characteristic. The higher the rating, the more suitable the material is for coconut rhinoceros beetle.

1. Moisture: CRB like damp material. Is it as moist as a piece of chocolate cake?

2. Particle Size: Small particle size (the size of coarse sand) is best.

3. Decomposition: Is the material broken down?- Look for a deep brown color.

4. Palm Material: Is the material made of palms? (leaves/ fruit/ trunk/ etc.)

5. OFB: Are there oriental flower beetle (OFB) present? - OFB and CRB breed in the same type of material. (See back for ID key)

Material Rating: _____

CRB Found: circle what was found and list the amount of each. Take a photo of the find with a ruler for scale. Send the photo to the CRB Response at info@crbhawaii.org

Frass: _____

Larva: _____

Adult: _____

Egg: _____

Pupa: _____

Estimate the size of the area searched (ft.):

Length: _____

Width: _____

Depth: _____

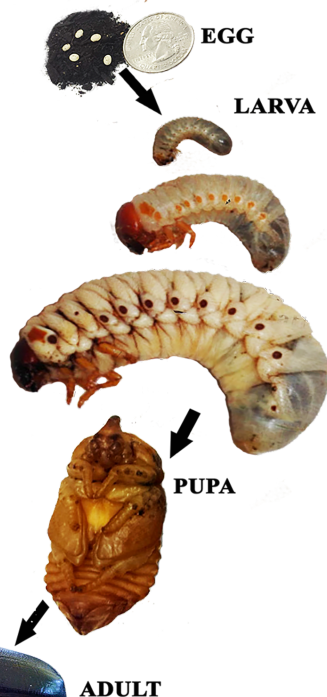
Great Job!

Upload your data to the CRB Response using this form.
(QR code link to Google Form)

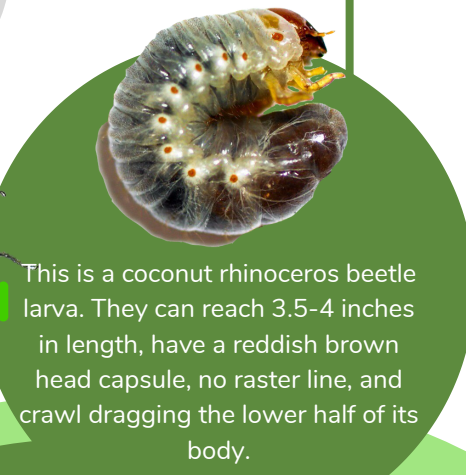
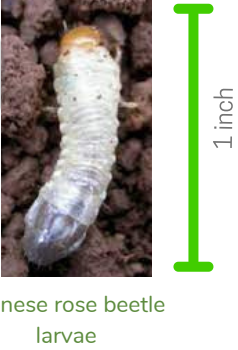
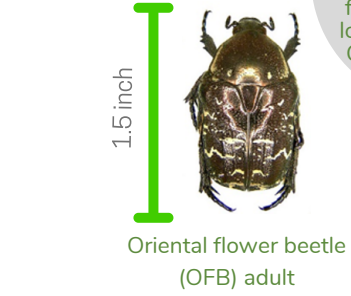
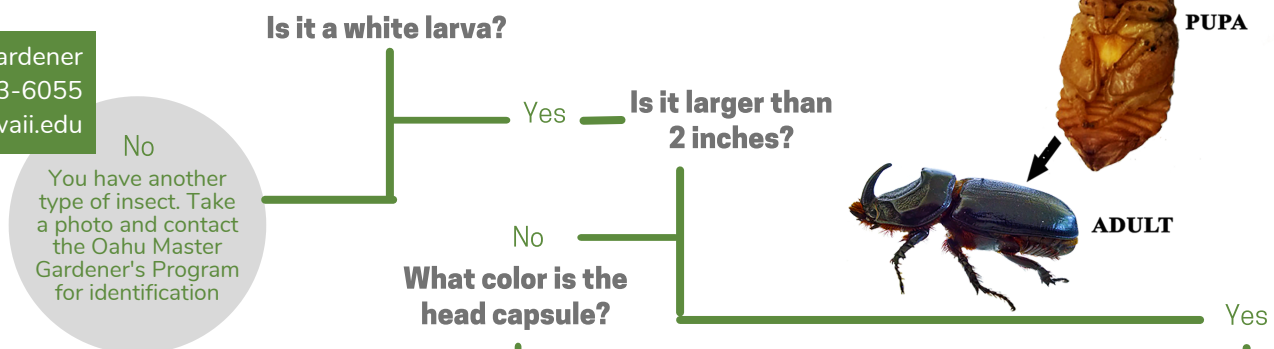


Coconut Rhinoceros Beetle Identification Key

Identifying Larvae: There are a few look-alike species that are similar to coconut rhinoceros beetle. Use this key to determine what type of larvae you found.



UH Master Gardener
808-453-6055
oahumg@ctahr.hawaii.edu



The CRB Response

(808)679-5244
info@crbhawaii.org
www.crbhawaii.org

